

PROJECT DATA COMPARISON:

BLDG	ORIGINAL	PROPOSED
STORIES	1	2
AREA (SF)	51,000	98,082
PARKING REQ'D *	26	63
PARKING PROVIDED	22	63

* SEE ARCHITECTURAL SITE PLAN FOR CURRENT PROJECT DETAIL.

NO.	DESCRIPTION	APPD. ENGR.	DATE	APPD. EU.	DATE

SCALE:	BENCH MARK
HORIZ. 1" = 20'	
VERT. 1" = N/A	

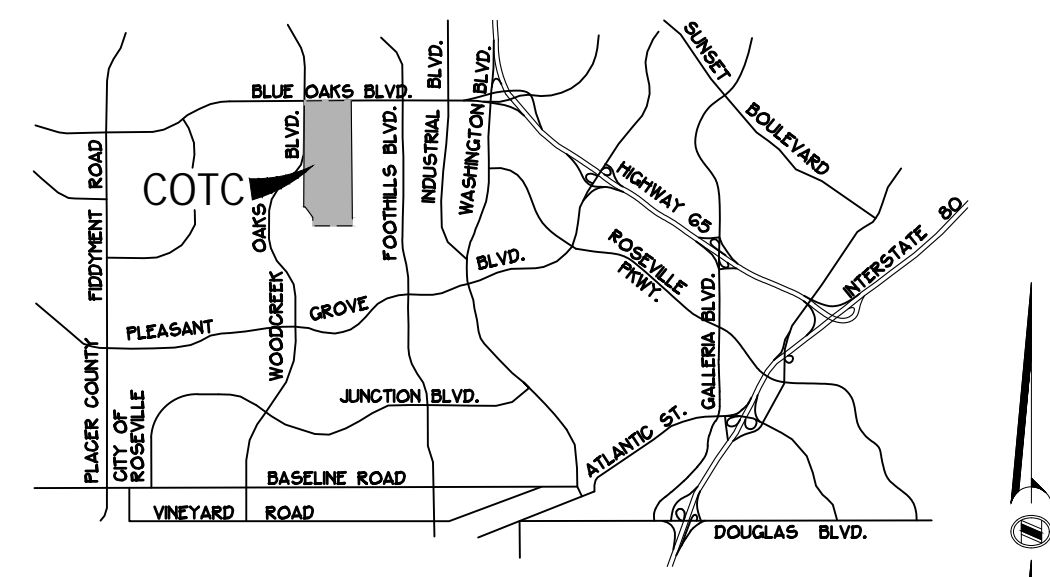
COMPUTED	MJC
DESIGNED	TRA
DRAWN	STAFF
PROJ. ENGR.	SMP

mp **MORTON & PITALO, INC.**
 CIVIL ENGINEERING • LAND PLANNING • LAND SURVEYING
 Folsom • Fresno
 600 Colledge Drive, Suite #140
 Folsom, CA 95630
 phone: (916) 984-7621
 web: www.mpengr.com

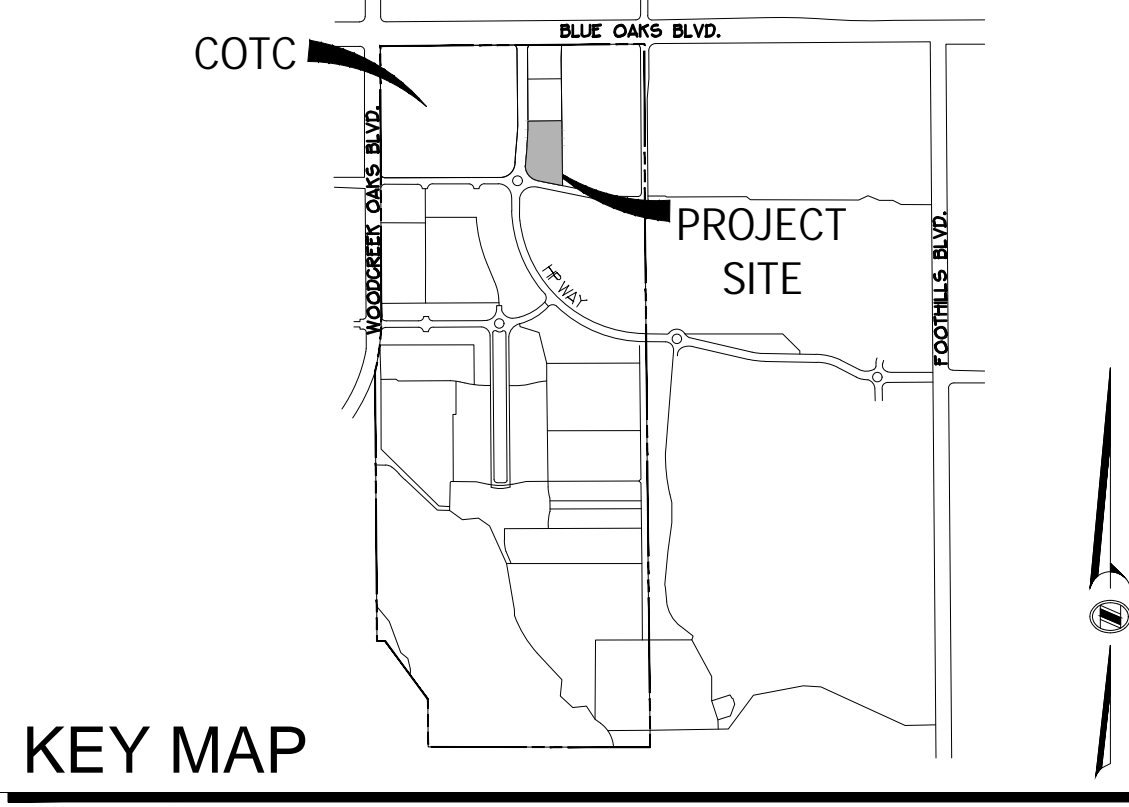
MPP MODIFICATION STAGE 1 EXHIBIT
IVY @ CAMPUS OAKS TOWN CENTER- LOT 15
 275 ROSEVILLE PARKWAY
 SUBSTANTIAL CONFORMANCE CIVIL SITE PLAN
 ROSEVILLE, CALIFORNIA

DATE	SEPTEMBER 14, 2022
SHEET	1
OF	4

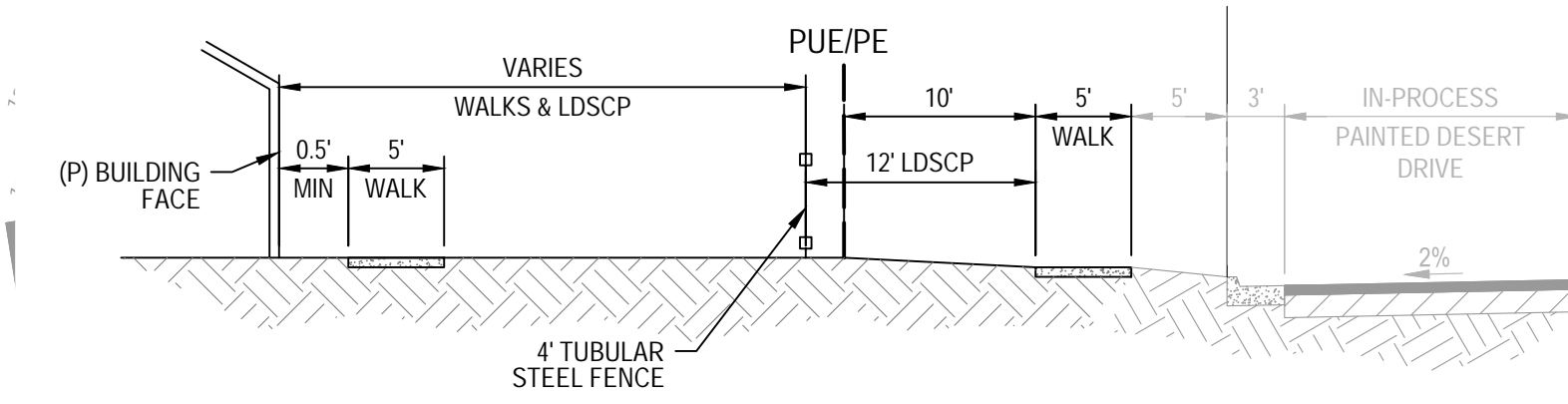
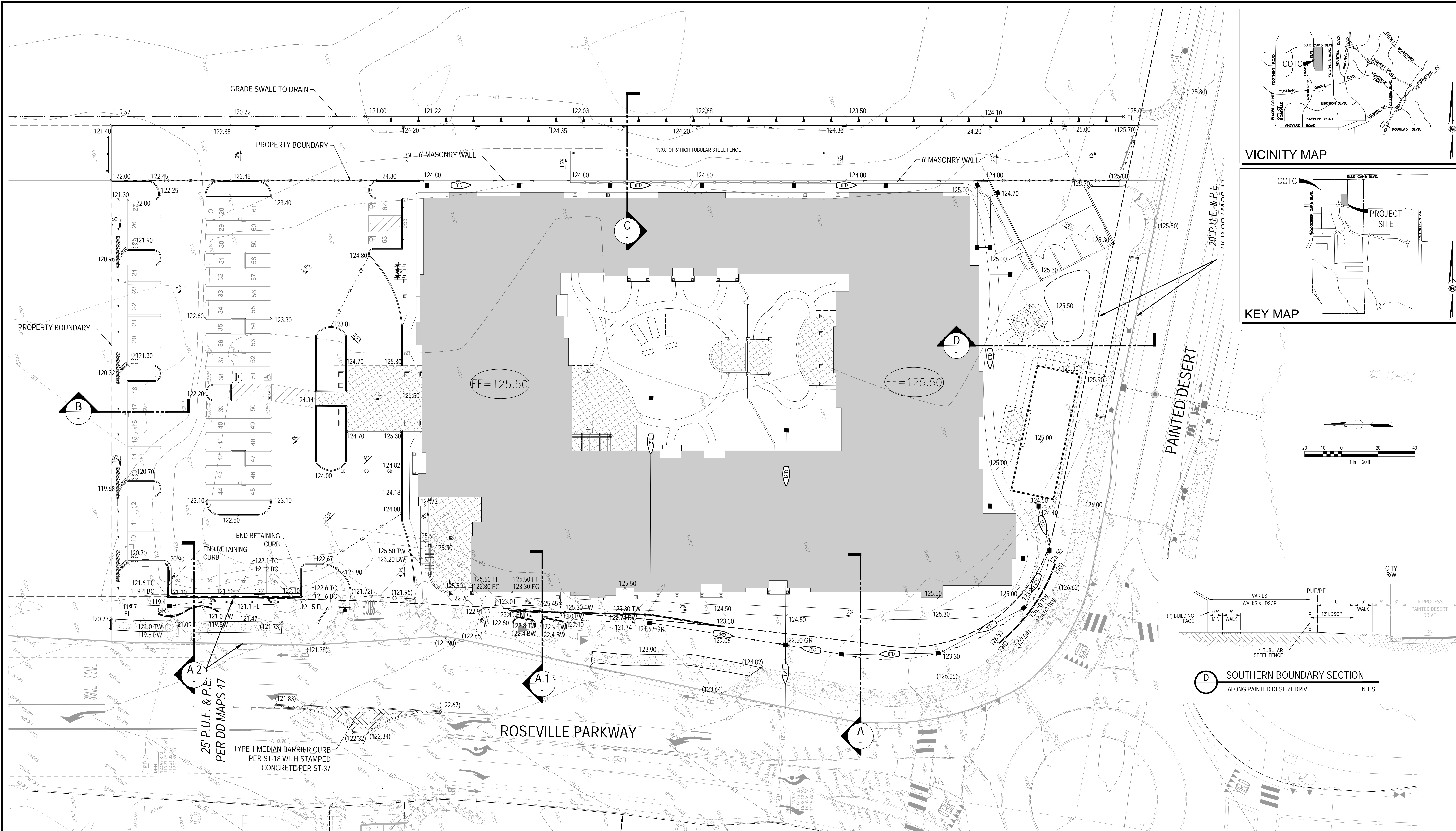
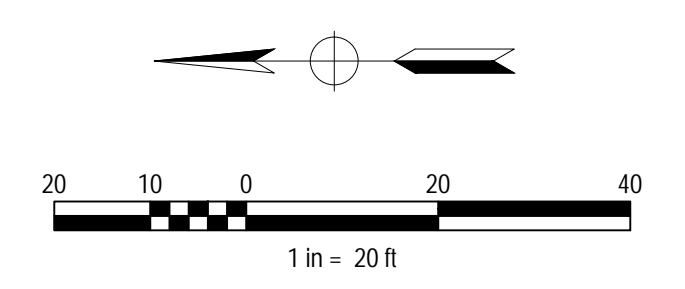
PL22-0178 (MPP MOD PL 18-0080 HPCO) MPP MODIFICATION- STAGE 1 & 2



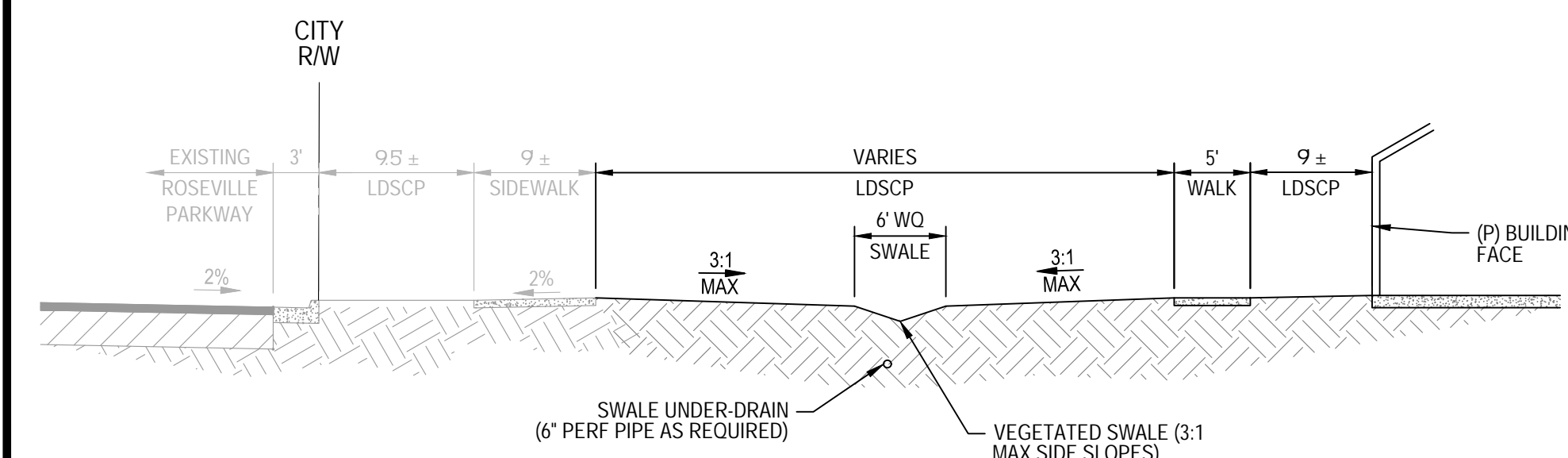
VICINITY MAP



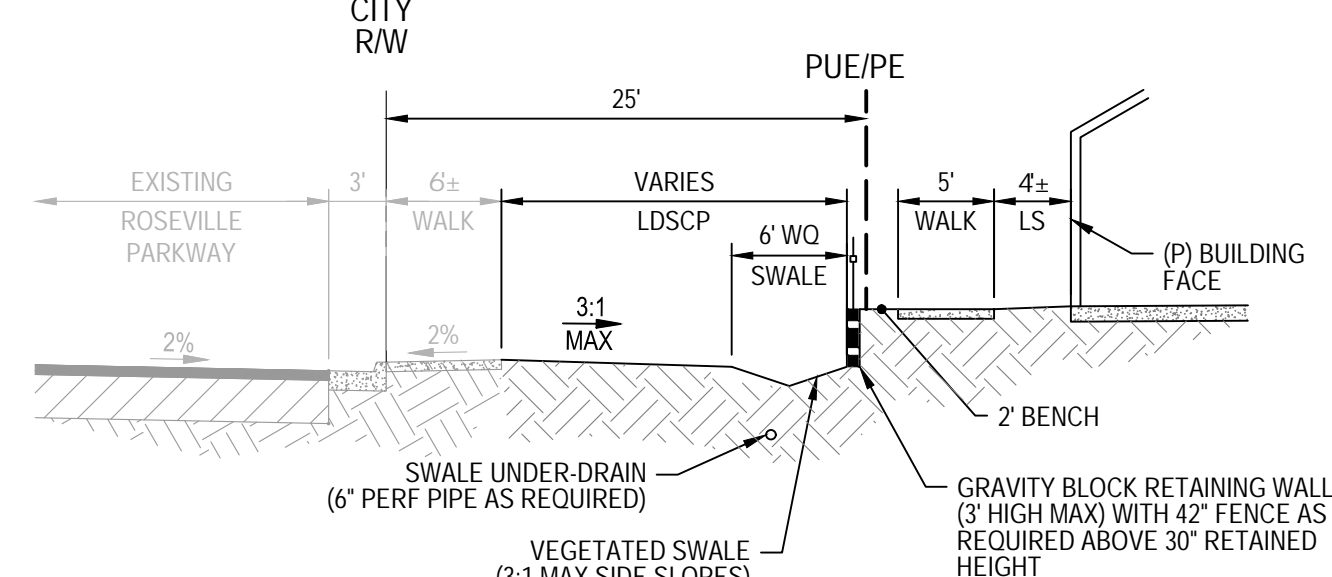
KEY MAP



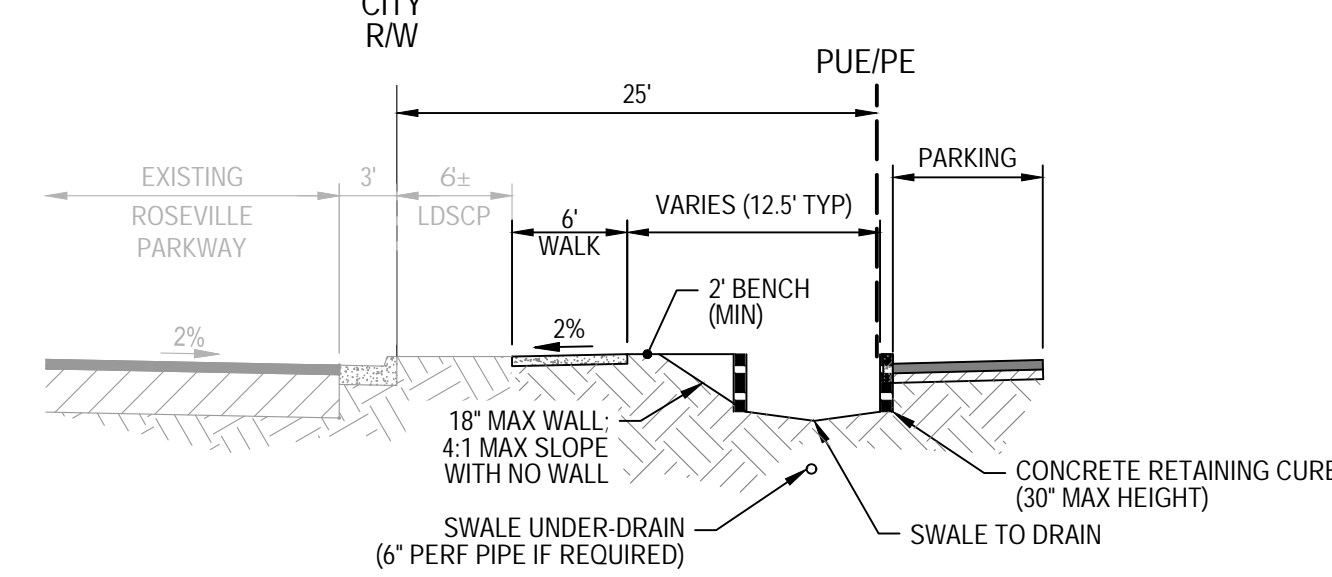
D SOUTHERN BOUNDARY SECTION
ALONG PAINTED DESERT DRIVE N.T.S.



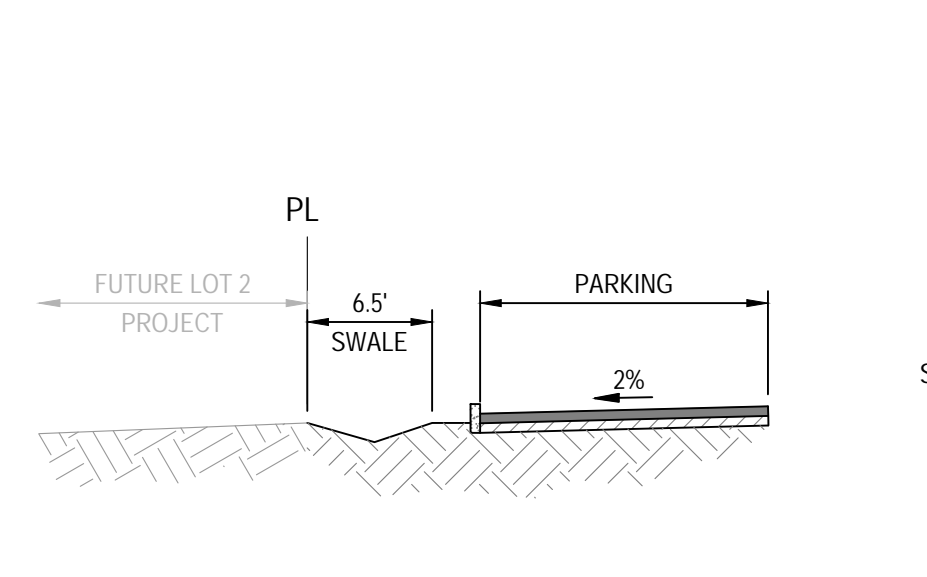
A WESTERN BOUNDARY SECTION
ALONG ROSEVILLE PARKWAY N.T.S.



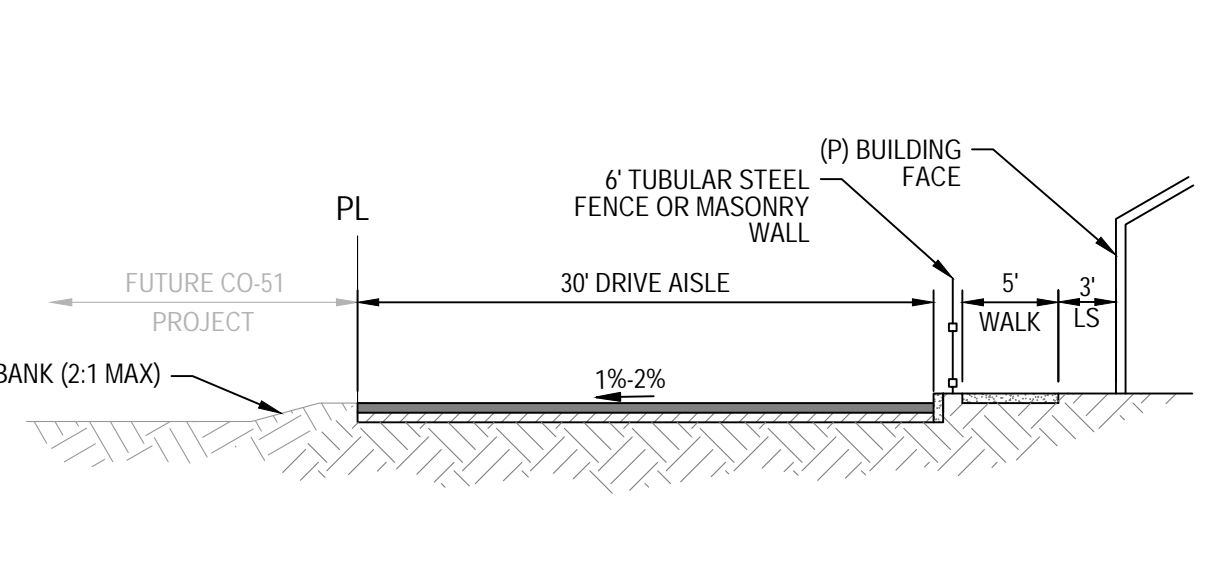
A1 WESTERN BOUNDARY SECTION
ALONG ROSEVILLE PARKWAY N.T.S.



A2 WESTERN BOUNDARY SECTION
NORTH ALONG ROSEVILLE PARKWAY N.T.S.



B NORTHERN BOUNDARY SECTION
ADJACENT TO LOT 2 N.T.S.



C EASTERN BOUNDARY SECTION
DRIVE ENTRY FROM BLUE OAKS BLVD N.T.S.

DATE PLOTTED: 09/14/2022 10:58:11 AM; USER: JEFFREY.MCCOY; PROJECT: IVY @ CAMPUS OAKS TOWN CENTER - LOT 15; DRAWING: PRELIMINARY GRADING PLAN; SCALE: 1/8" = 1'-0"; SHEET: 2 OF 4

NO.	DESCRIPTION	APPD ENGR	DATE	APPD EU	DATE

SCALE:	BENCH MARK
HORIZ. 1" = 20'	
VERT. 1" = N/A	

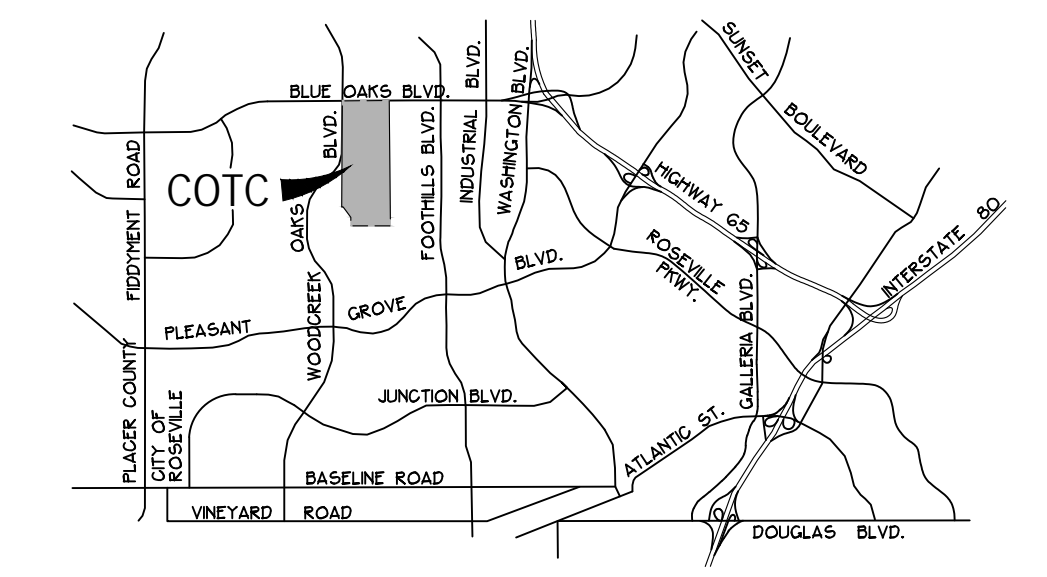
COMPUTED	MJC
DESIGNED	TRA
DRAWN	STAFF
PROJ. ENGR.	SMP

--	--	--	--	--	--

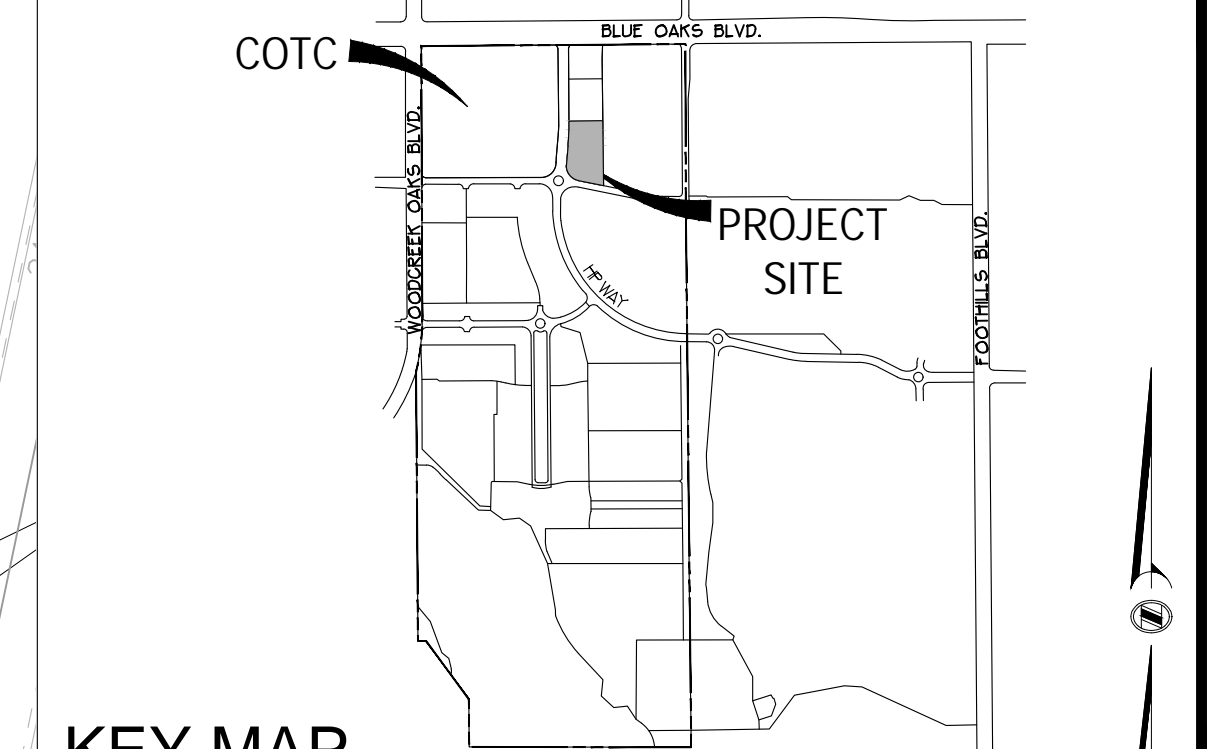
mp **MORTON & PITALO, INC.**
 CIVIL ENGINEERING • LAND PLANNING • LAND SURVEYING
 Folsom • Fresno
 600 Coolidge Drive, Suite #140
 Folsom, CA 95630
 phone: (916) 984-7621
 web: www.mpengr.com

MPP MODIFICATION STAGE 1 EXHIBIT
IVY @ CAMPUS OAKS TOWN CENTER- LOT 15
 275 ROSEVILLE PARKWAY
 PRELIMINARY GRADING PLAN
 ROSEVILLE, CALIFORNIA

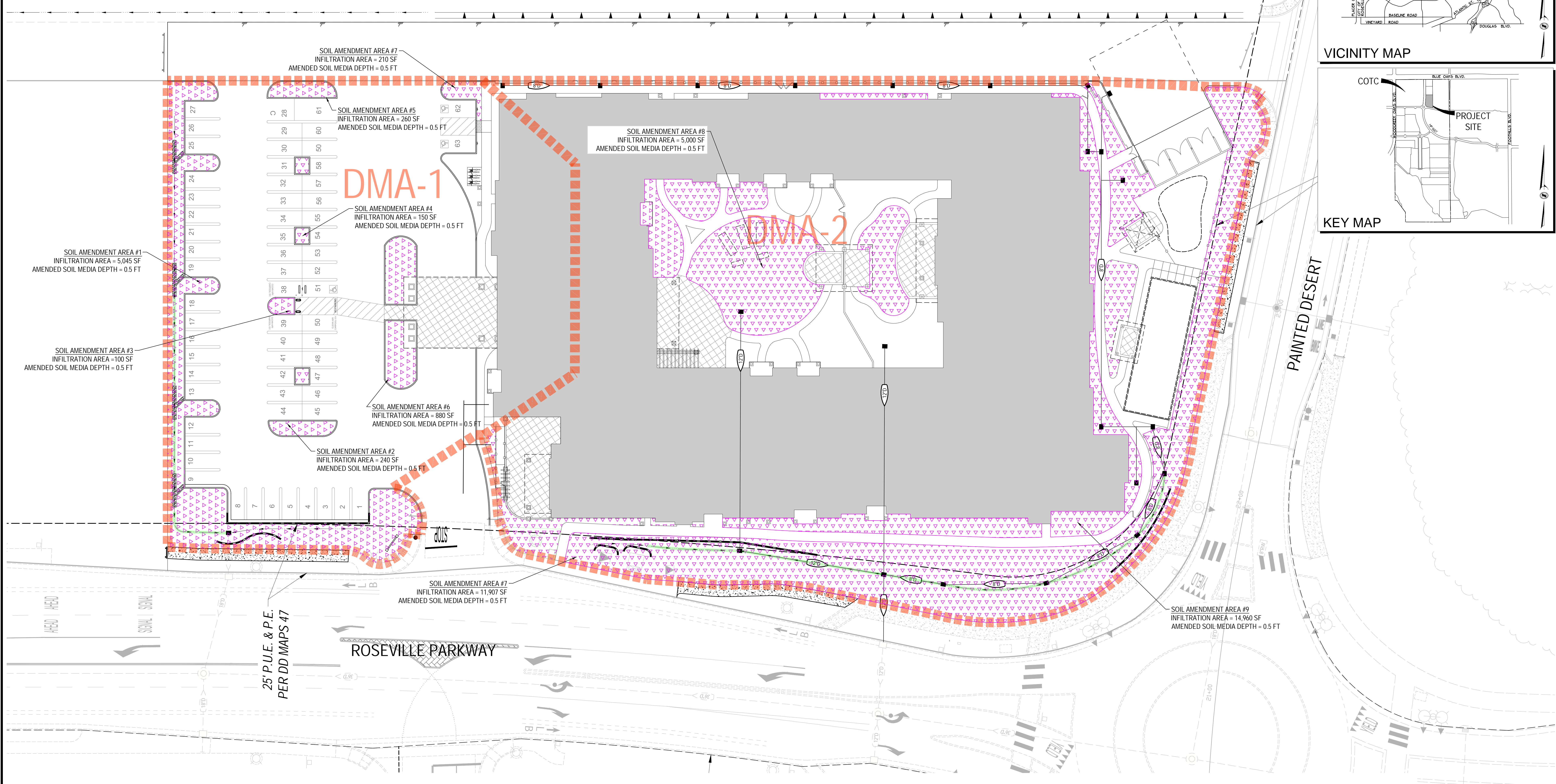
DATE	SEPTEMBER 14, 2022
SHEET	2
OF	4



VICINITY MAP



KEY MAP



DMA-1

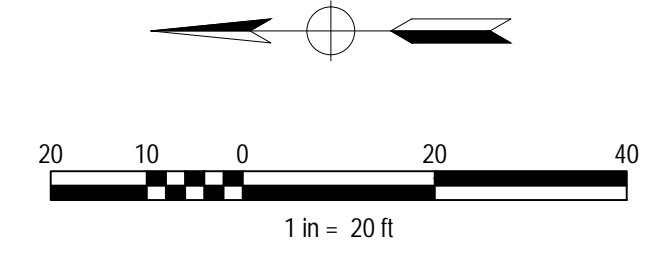
DMA-2

- NOTES:**
1. PROPOSED IMPROVEMENTS IN ACCORDANCE WITH THE WEST PLACER COUNTY STORM WATER QUALITY DESIGN MANUAL.
 2. IMPERVIOUS AREA REDUCTION PER FORM 3-4 OF WEST PLACER COUNTY STORM WATER QUALITY DESIGN MANUAL
 3. VEGETATED WATER QUALITY SWALE TO CONVEY AND TREAT STORMWATER COLLECTED THROUGHOUT SITE.

AMENDED SOIL AREA

DMA #	TOTAL DMA AREA (S.F)	IMPERVIOUS AREA (S.F)	TOTAL AMENDED SOIL AREA (S.F)	DEPTH OF AMENDED SOIL AREA
1	44,027	36,857	6,985	0.5' (6")
2	89,922	68,022	19,960	0.5' (6")

- AMENDED SOIL AREA
- VEGETATED WATER QUALITY SWALE
- DMA-1 & 2 LIMITS



DATE PLOTTED: 09/14/2022 10:58:11 AM; PROJECT: IVY @ CAMPUS OAKS TOWN CENTER; DRAWN BY: J. BROWN; CHECKED BY: J. BROWN; SCALE: 1"=20'; SHEET: 4 OF 4

NO.	DESCRIPTION	APPD. ENGR.	DATE	APPD. EU.	DATE

SCALE:	BENCH MARK
HORIZ. 1" = 20'	
VERT. 1" = N/A	

COMPUTED	MJC
DESIGNED	TRA
DRAWN	STAFF
PROJ. ENGR.	SMP

mp **MORTON & PITALO, INC.**
 CIVIL ENGINEERING • LAND PLANNING • LAND SURVEYING
 Folsom • Fresno
 600 Colledge Drive, Suite #140
 Folsom, CA 95630
 phone: (916) 984-7621
 web: www.mpengr.com

MPP MODIFICATION STAGE 1 EXHIBIT
IVY @ CAMPUS OAKS TOWN CENTER- LOT 15
 275 ROSEVILLE PARKWAY
 PRELIMINARY WATER QUALITY PLAN
 ROSEVILLE, CALIFORNIA

DATE	SEPTEMBER 14, 2022
SHEET	4
OF	4

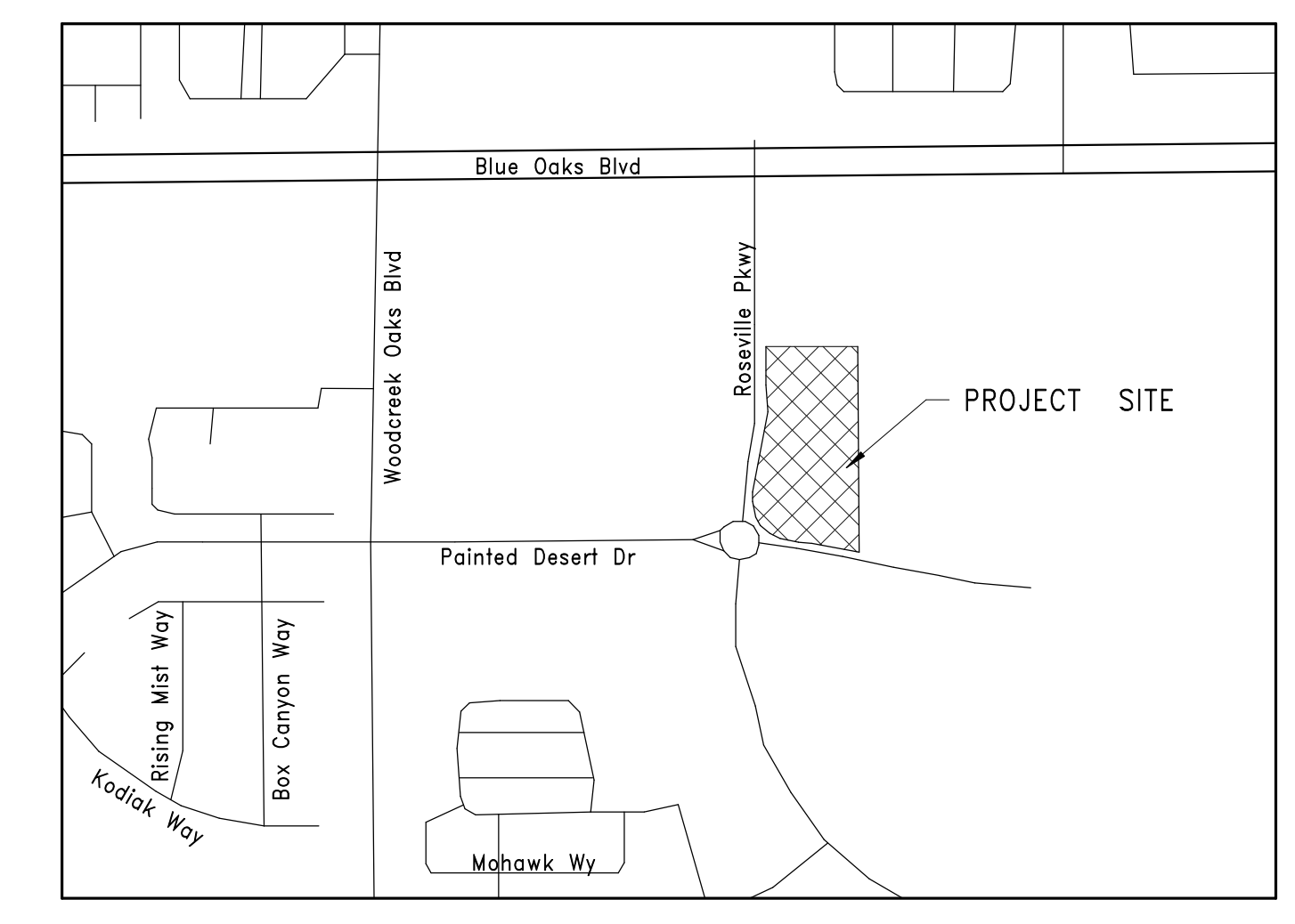
PROJECT INFORMATION	
A.P.N.	481-260-031
PROPERTY SIZE:	3.364 ACRES
ZONING DESIGNATION:	COMMUNITY COMMERCIAL WITHIN THE HEWLETT-PACKARD CAMPUS OAKS
CONSTRUCTION TYPE:	MASTER PLAN
SPRINKLERS:	FULLY SPRINKLERED
NUMBER OF STORIES:	2 STORIES
BUILDING GROSS AREA:	98,132 S.F.
BUILDING HEIGHT:	30'-0"
OCCUPANCY GROUPS:	R2.1, A2, B, S1

CONTACTS	
OWNER: PARK IV GROUP, LLC 3 PARK PLZ, SUITE 500 IRVINE, CA 92614 949-744-5200 CARISSA SAVANT csavant@parkmontmg.com	CIVIL ENGINEER: MORTON & PITALO, INC. 600 COOLIDGE DRIVE, SUITE 140 FOLSOM, CA 95630 916-984-7621 SCOTT PEDERSEN spedersen@mpengr.com
ARCHITECT: bhills architecture, PC 3156 S. BOWN WAY BOISE, IDAHO 83706 208-258-6151 BYRON HILLS bhills@bhillsarch.com	LANDSCAPE ARCHITECT: ROACH & CAMPBELL 111 SCRIPPS DRIVE SACRAMENTO, CA 95825 916-342-7119 DAVID CAMPBELL David@roachcampbell.com

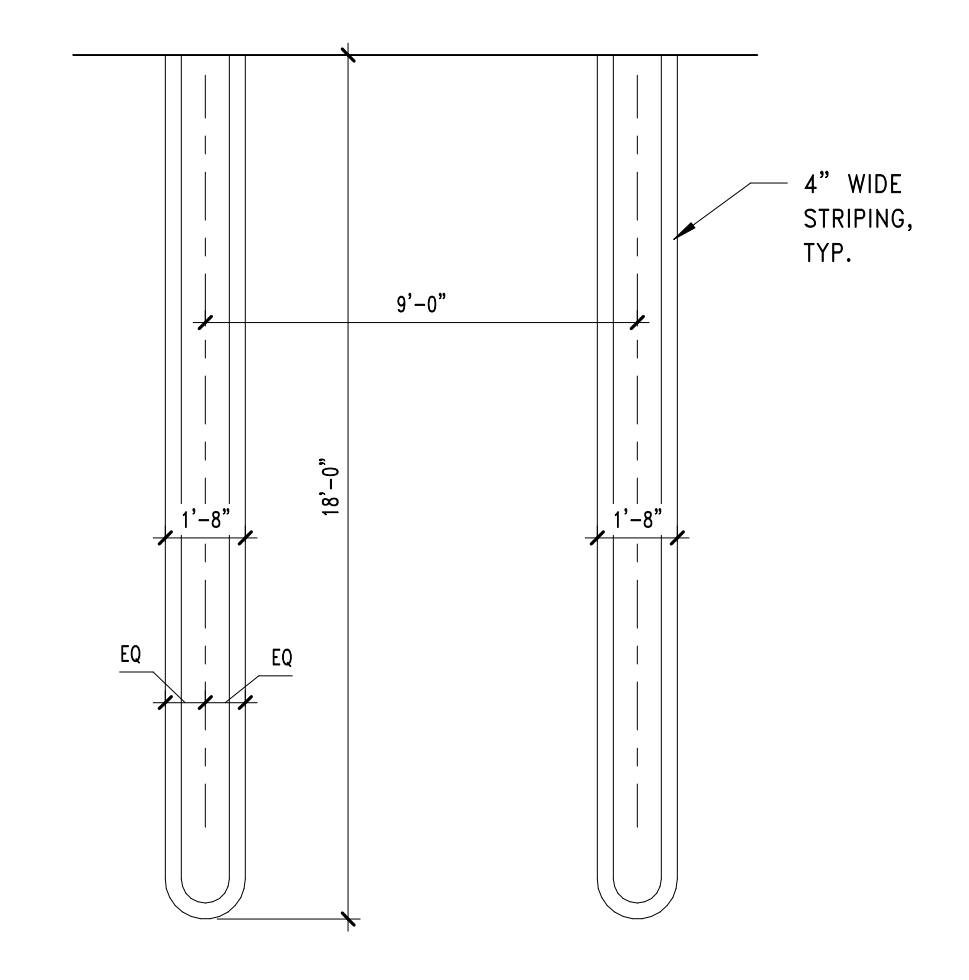
PARKING	
LONG TERM CARE FACILITIES: REQUIRED: 1 PER 3 EMPLOYEES FOR LARGEST SHIFT, PLUS 3/4 PER ASSISTED LIVING UNIT, PLUS 1 PER 3 BEDS FOR MEMORY CARE UNITS	
15 EMPLOYEES LARGEST SHIFT 15/3 = 5 REQUIRED	
70 ASSISTED LIVING UNITS 70x0.75 = 52.5 REQUIRED	
30 MEMORY CARE UNITS W/ 37 BEDS 37/3 = 12.33 REQUIRED	
REQUIRED PARKING:	= 70
STANDARD PARKING SPACES	= 67
ACCESSIBLE PARKING SPACES	= 3
PROVIDED PARKING:	= 63
STANDARD PARKING SPACES	= 50
COMPACT PARKING SPACES	= 7
CLEAN AIR/EV READY SPACES	= 3 (INCL. 1 VAN ACCESSIBLE SPACE)
ACCESSIBLE PARKING SPACES	= 2
VAN ACCESSIBLE PARKING SPACES	= 1
*CLEAN AIR/CARPOOL/EV PARKING CALCULATIONS: (63 TOT. SPACES) - (38 RESIDENT SPACES)	= 25 SPACES TO BASE CLEAN AIR/EV CALCULATIONS ON
CLEAN AIR/CARPOOL/EV SPACES (CALGREEN TABLE 5.106.5.3)	= 3
EV READY FUTURE CHARGING SPACES (CALGREEN TABLE 5.106.5.3.3)	= 2
ACCESSIBLE EV CAPABLE CHARGING SPACE (CBC TABLE 11B-228.3.2.1)	= 1 VAN ACCESS.

BIKE PARKING	
SHORT-TERM BIKE PARKING: REQUIRED: 5% OF MOTORIZED VEHICLE PARKING SPACES	
TOTAL MOTORIZED VEHICLE PARKING SPACES = 63	
REQUIRED SHORT-TERM BIKE PARKING: 57 x .05 = 4	
PROVIDED SHORT-TERM BIKE PARKING: PARKING SPACES = 6	
LONG-TERM BIKE PARKING SHALL BE PROVIDED INSIDE THE BUILDING	

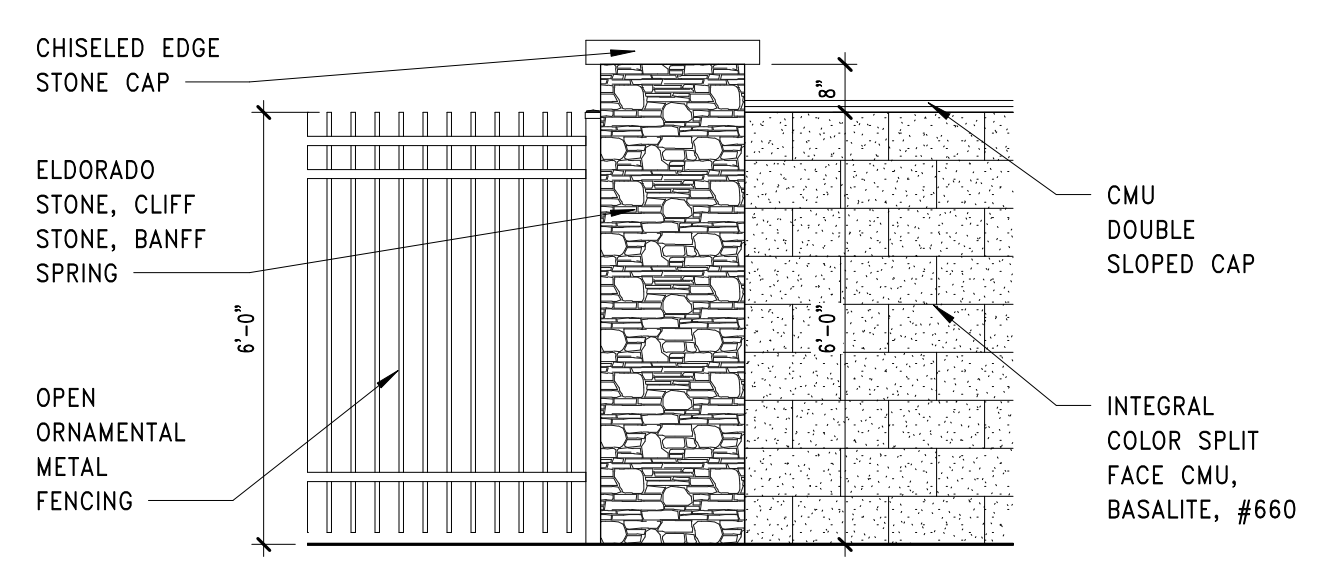
FIRE SUPPRESSION NOTE:
 FIRE SUPPRESSION SYSTEM TO BE INSTALLED THROUGHOUT BUILDING.
 FIRE SUPPRESSION TO BE SUBMITTED UNDER A SEPARATE PERMIT.



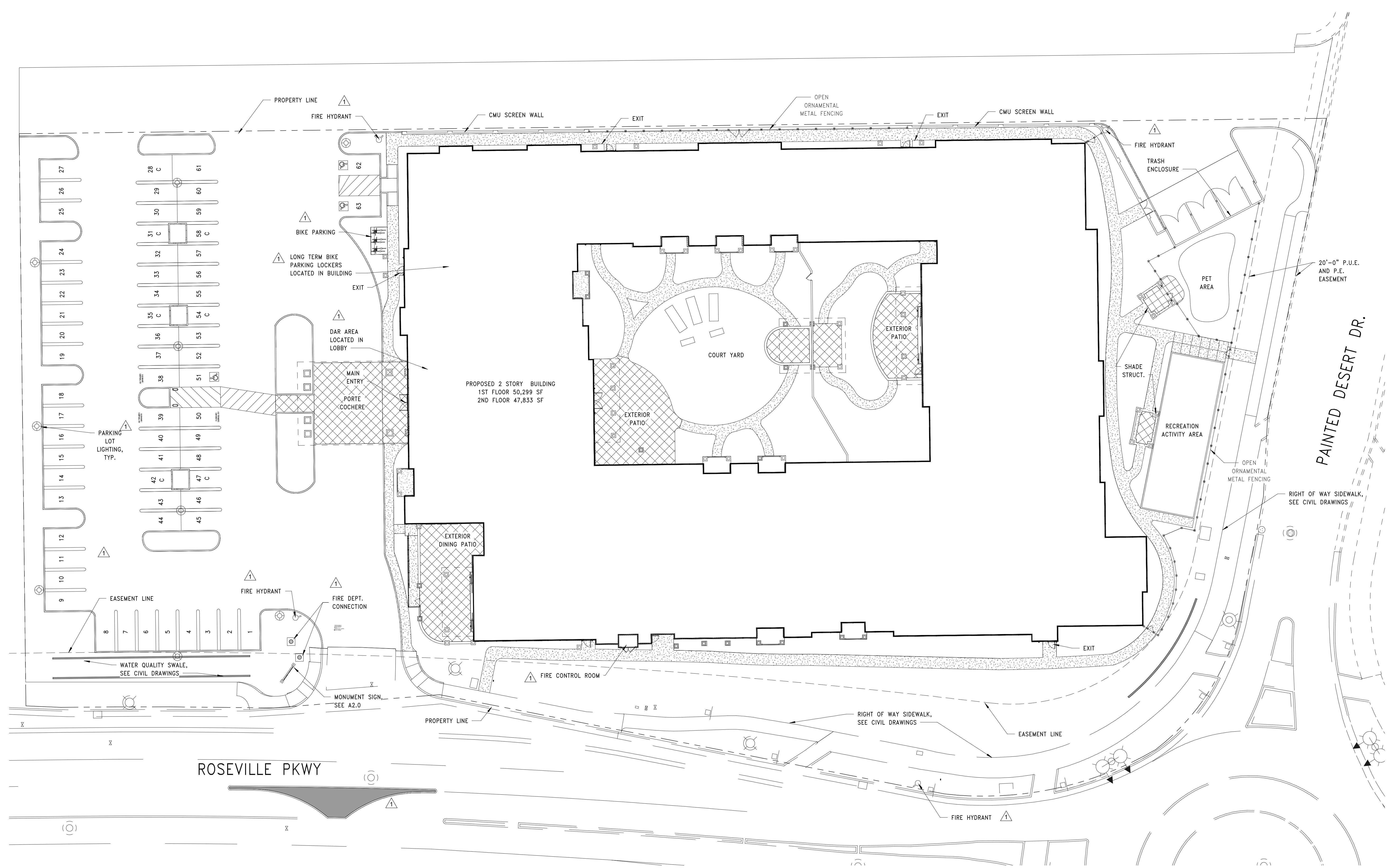
VICINITY MAP
 NORTH



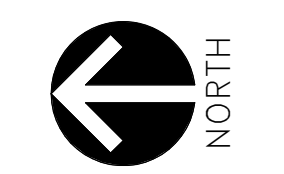
2 PARKING STRIPPING
 SCALE: 1/4" = 1'-0"



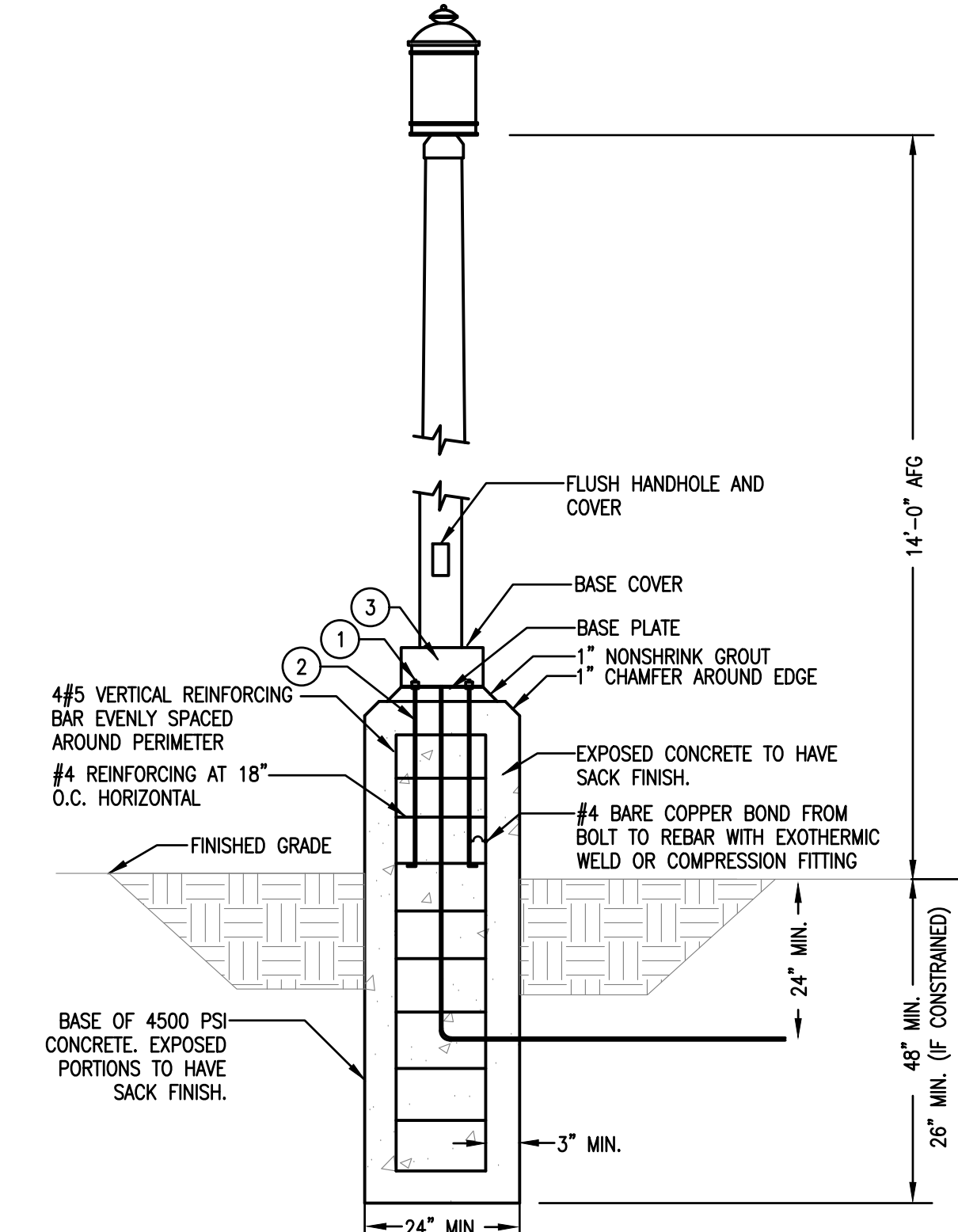
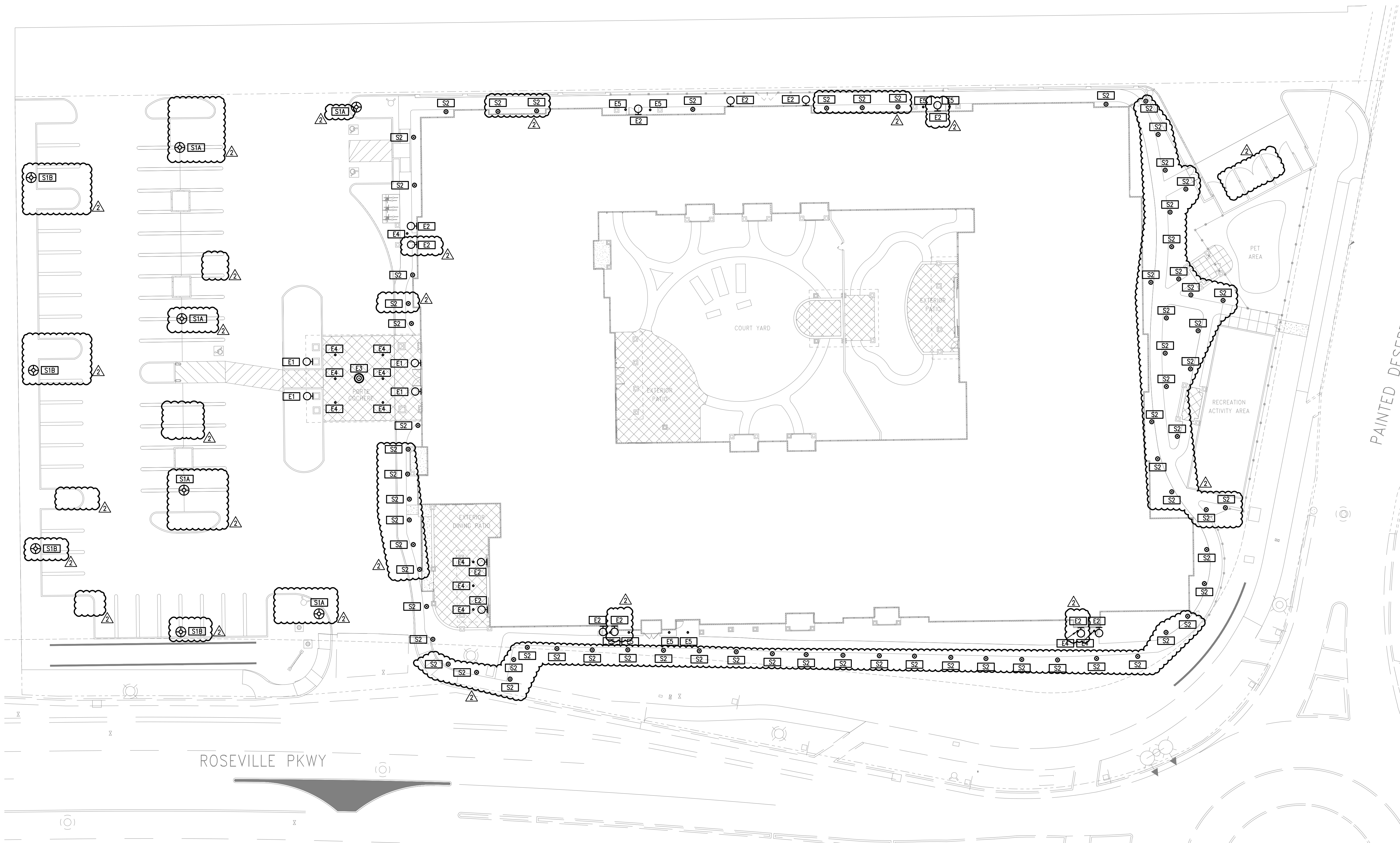
1 FENCING AND SCREEN WALL
 SCALE: 3/8" = 1'-0"



ARCHITECTURAL SITE PLAN
 1" = 20'-0"

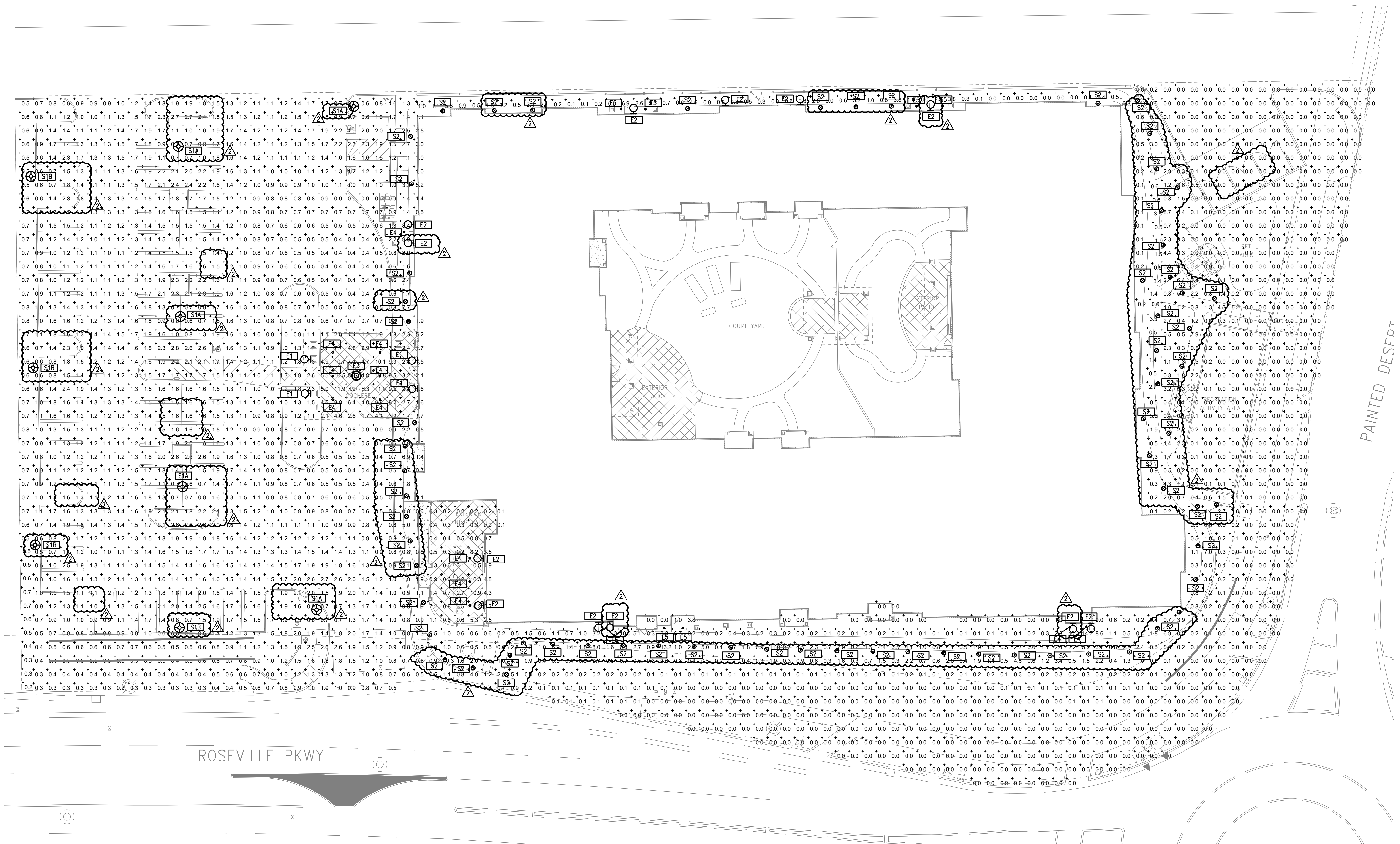


THE IVY AT BLUE OAKS (OUTDOOR)											
LUMINAIRE	DESCRIPTION	MANUFACTURER	CATALOG NUMBER	LAMPS	INPUT WATTS	VOLTAGE	MOUNTING	B BACKLIGHT RATING	U UPLIGHT RATING	G GLARE RATING	COMMENTS
E1	SCONCE (LARGE)	MAXIM LIGHTING	WICKSBURG #30024CLBK	(3) 40W E12 LED EQUIVALENT	15	120V	WALL	NA	NA	NA	ENTRY
E2	SCONCE (SMALL)	MAXIM LIGHTING	WICKSBURG #30022CLBK	(1) 60W E26 LED EQUIVALENT	9	120V	WALL	NA	NA	NA	COMMON ENTRY
E3	PORCH HANGING	BIRCHLANE	NATARSHA 8 - LIGHT LANTERN #GRCK1701	(8) 60W E12 LED EQUIVALENT	72	120V	SUSPENDED	NA	NA	NA	PORTE COCHERE, ASSISTED DINING PATIO
E4	OUTDOOR SOFFIT LENSED	GOTHAM	EVO6-30/10-AR-MD-LS-MMOLT-EX10	LED	9.6	MMOLT	RECESSED	NA	NA	NA	PORCH ENTRY
E5	OUTDOOR SOFFIT LENSED	GOTHAM	EVO6-30/05-AR-MD-LS-MMOLT-EX10	LED	6.2	MMOLT	RECESSED	NA	NA	NA	PORCH ENTRY
S1A	PARKING LIGHT POLE	HOLOPHANE	ARUE3-P80-30K-MMOLT-AL5-BK-BL	LED	100	MMOLT	DECORATIVE POLE	B4	U3	G4	SITE
S1B	PARKING LIGHT POLE W/ HOUSE SHIELD	HOLOPHANE	ARUE3-P20-30K-MMOLT-AL3-BK-BL W/ PHSS90	LED	40	MMOLT	DECORATIVE POLE	B2	U3	G3	SITE
S2	LOW LEVEL PATH LIGHT	JOHN TIMBERLAND	BASSET TEXTURED BLACK #67M28	LED	4	120V	LOW LEVEL PATH LIGHT	NA	NA	NA	SITE




- POLE BASE DETAIL GENERAL NOTES:**
- WHERE CONCRETE SLAB OR PAVING IS IN DIRECT CONTACT WITH POLE BASE, THE BASE IS CONSTRAINED AND THE FOOTING EMBEDDMENT MAY BE REDUCED AS NOTED.
- POLE BASE DETAIL KEYED NOTES:**
- PROVIDE GALVANIZED LOCKNUTS AND LOCKWASHERS.
 - PROVIDE ANCHOR BOLTS TO MATCH PATTERN AS PROVIDED BY MANUFACTURER.
 - STUB 3/4" - 6" ABOVE POLE BASE.

2 POLE BASE DETAIL
SCALE: N.T.S.



1 SITE PHOTOMETRIC PLAN
 SCALE: 1" = 20'-0"
 NORTH

Vicksburg | 30024CLBK Job Name: Job Type: Qty: E1: 30024CLBK



PRODUCT DESCRIPTION
Inspired by classic coach gas lanterns, the Vicksburg collection features die-cast aluminum construction finished in Black with Clear glass. The candle sleeves are done in a contrasting off-white finish to add dimension to the lantern. Available in numerous sizes and configurations including a handsome pocket wall.

MEASUREMENTS
DIMENSION : 8" W x 24" H x 9.25" Ext
BACK PLATE : 4.75" W x 8" H x 7.25" HCO
HANGING WEIGHT : 7.3 lb

LAMPING
INPUT VOLTAGE : 120V
BULB : 3 x 40W Incandescent E12 Candleabra - 120W Total
BULB INCLUDED : (Not Included)
DIMMABLE : Y
LIGHTING_DIRECTION : Up

FINISHES OPTION
Black

GLASS
Clear CL

MATERIAL
Aluminum, Glass


RATINGS
cETLus
Wet Location

ADDITIONAL
INSTALL UP/DOWN: Up
OPERATING TEMPERATURE: 20°C (-4°F), 40°C (104°F)

Always consult a qualified electrician before installing any lighting product.

WESTERN DISTRIBUTION CENTER (HEADQUARTER)
253 NORTH WINDLAND AVE. CITY OF INDUSTRY, CA 91744
EASTERN DISTRIBUTION CENTER
4200 SHIRLEY DR. ATLANTA, GA 30336
F. 626.956.4200 | F. 626.956.4225 | maxlighting.com

Vicksburg | 30022CLBK Job Name: Job Type: Qty: E2: 30022CLBK



PRODUCT DESCRIPTION
Inspired by classic coach gas lanterns, the Vicksburg collection features die-cast aluminum construction finished in Black with Clear glass. The candle sleeves are done in a contrasting off-white finish to add dimension to the lantern. Available in numerous sizes and configurations including a handsome pocket wall.

MEASUREMENTS
DIMENSION : 6.75" W x 16" H x 8" Ext
BACK PLATE : 4.75" W x 6" H x 6" HCO
HANGING WEIGHT : 3.87 lb

LAMPING
INPUT VOLTAGE : 120V
BULB : 1 x 40W Incandescent E26 Medium - 40W Total
BULB INCLUDED : (Not Included)
DIMMABLE : Y
LIGHTING_DIRECTION : Down

FINISHES OPTION
Black

GLASS
Clear CL

MATERIAL
Aluminum, Glass

RATINGS
cETLus
Wet Location

ADDITIONAL
INSTALL UP/DOWN: Down
OPERATING TEMPERATURE: 20°C (-4°F), 40°C (104°F)

Always consult a qualified electrician before installing any lighting product.

WESTERN DISTRIBUTION CENTER (HEADQUARTER)
253 NORTH WINDLAND AVE. CITY OF INDUSTRY, CA 91744
EASTERN DISTRIBUTION CENTER
4200 SHIRLEY DR. ATLANTA, GA 30336
F. 626.956.4200 | F. 626.956.4225 | maxlighting.com

Lighting / Ceiling Lights / Chandeliers / 902: GRCK1701

E3: GRCK1701

Natarsha 8 - Light Lantern Geometric Chandelier
★★★★★ 4.9 (28 Reviews)

Free Shipping
Returns for 90 days - Total 97% with a 30-day money back guarantee

or 4 interest-free payments of \$193
with Affirm

Arrives by Thu, Jun 29 to 95052

1 2 3 4 Add to Cart

What We Offer
 Expert Installation from \$124.99 (Local install)
 5 Year Protection Plan for \$128.99 (Watch Coverage)

Any Questions? We're here for you.
Call Us | Live Chat

About This Product
Overview | The Details | Shipping & Returns

Features
Fixture Design: Lantern
Canopy: Yes
Fixture Shape: Geometric
Number of Lights: 8
Adjustable Hanging Length: Yes
Number of Light Tiers: 2
Light Direction: Asymmetrical
Finish: Weathered Oak/Antique Fog
Shade Included: No
Dimmer Included: Yes
Primary Material: Metal
Dry, Damp or Wet Location Listed: Damp
What is Dry, Damp or Wet Location Listed: This indicates whether the fixture is safe to use in dry locations, damp locations (most environments), or wet locations (direct exposure to water).
Integrated LED: No
Bulb Not Included But Required: Yes
Recommended Bulb Shape: Candle
Bulb Base: E12/Candleabra
Dimmable: No
Voltage: 120 Volt
Maximum Wattage (per bulb): 40 Watt
Surge: Intended and Approved Use: Residential Use, Non-Residential Use
Power Source: Hardwired
Hanging Method: Rod
Mount Type: Steel
Imported: Yes

Adjustable Hanging Length
Max Height 105.62"
Min Height 52.62"

Other Dimensions
Canopy 1.12" H x 5.5" W x 3" D
Fixture 43" H x 26" W x 20" D
Chandelier Weight 13 lb.

Additional Documents
[View all documents](#)

HOLOPHANE
LEADER IN LIGHTING SOLUTIONS

ARUE3
Utility Arlington Postop LED

Order Number: S1A: ARUE3-P80-30K-MVOLT-AL5-BK-BL
S1B: ARUE3-P40-30K-MVOLT-AL3-BK-BL W/ PHSS90
Notes: The S1A/S1B

GENERAL DESCRIPTION
The decorative postop lantern is ideal for lighting city streets, residential areas, campuses, parking lots, and walkways. The adjustable luminaire consists of a luminaire housing, a primary optic, and a decorative cover.

Optical Assembly
The optical assembly consists of a primary optic and acrylic reflector to precisely distribute light with excellent visual comfort and reduced glare. Comparable with CCT options of 2700K, 3000K, and 4000K. CB is 30 maximum. Available in optional DALI dimming. Driver is available in 120-277V, 347-480V, and 277V-480V options (S1040-RL). Driver life is rated to at least 100,000 hours. The 277V-480V (X000) option includes enhanced power quality protection for maximum robustness against line-to-line voltage transients, harmonic disturbances, and other real-world power quality disturbances.

Electrical Assembly
The cast aluminum electrical housing allows tool-less access with a spring loaded latch. The hidden hinge allows the door to swing open and remain open for easy access. A 10 gauge terminal block is provided to accept #14 through #2 size wires. The programmable LED driver includes 0-10V dimming with optional DALI dimming. Driver is available in 120-277V, 347-480V, and 277V-480V options (S1040-RL). Driver life is rated to at least 100,000 hours. The 277V-480V (X000) option includes enhanced power quality protection for maximum robustness against line-to-line voltage transients, harmonic disturbances, and other real-world power quality disturbances.

Finish
The luminaire housing and decorative cover are low copper die cast aluminum and finished with corrosion resistant super durable powder coat paint for maximum durability. Superior multi-stage pre-treating and painting process yields a finish that achieves a better coverage rating of 9 (per ASTM D1654) after over 5000 hours exposure to salt fog chamber (operated per ASTM D177).

Mounting
Luminaire includes an integral gasket that accepts a 3" tall by 82-118" x 3-1/8" O.D. stem. Secured to the stem by 6 set screws.

Control Options
Optional control include:
• Field adjustable output (AO) module for manual adjustment of lumen output of the luminaire
• Industry standard 0-10V dim and 7 pin NEMA photocell, optionally mounted inside the housing or externally in place of the lens
• "No light" AIR enabled for connection to night AIR wireless control networks via internally mounted antenna (N1AIR) or via motion-sensing photocell (S0500).
• DALI compatible drivers. Contact factory for details.
• Customization of lumen packages is possible. Contact factory for details.

Listing
The luminaire is CSA certified to US and Canadian standards, 200V/100A extreme surge protection per ANSI/IEEE C136.2, suitable for operation in ambient temperatures from -40°C to 60°C. Optical chamber is rated to IP66.
DesignLight Consortium (DLC) qualified product. Not all versions of this product may be DLC qualified. Please check the DLC Qualified Products List at www.dlcqualify.com/DLC.

Buy American
This product is assembled in the USA and meets the Buy American government procurement requirements under FAR, DFARS and DOT. Please refer to www.buyamericans.com/resources/buy-american for additional information.

Warranty
5-year limited warranty. This is the only warranty provided and no other statements in this specification sheet create any warranty of any kind. All other express and implied warranties are disclaimed. Complete warranty terms located at: www.holophane.com/support/warranty/terms-and-conditions

Note: Actual performance may differ as a result of end-user environment and application. All values are design or typical values, measured under laboratory conditions at 25 °C. Specifications subject to change without notice.

ORDERING INFORMATION
Example: ARUE3 P30 MVOLT GL3 BK SK PR7

Housing Style	LED Performance Package	Color Temperature	Voltage	Optics	Color	Final
ARUE3 Utility Arlington LED Post Top	P10 30W nominal	27K 2700K CCT	MVOLT 120-277V	Acrylic Reflector BK	Black	BL Ball
	P20 40W nominal	30K 3000K CCT	MVOLT 347-480V	AL3 Acrylic reflector 109°5	Bronze	SK Spike
	P30 50W nominal	40K 4000K CCT	100V 277-480V with enhanced power quality protection	CNC 109°5	Custom-matched color	None
	P40 60W nominal			GL Acrylic reflector 109°5	Green	
	P50 70W nominal			GLS Glass Reflector	Grey	
	P60 80W nominal			GL3 Glass reflector 109°5	White	
	P70 90W nominal			GLS Glass reflector 109°5	White	
	P80 100W nominal			W11	White	

Options:

Control Options:	NEMA Label Options:	Fixture Lead Options:
AO Field adjustable output	NL1x1 7x1" ANSI wattage label	L18 1.5' of prewire leads
N1AIR Night Air motion sensing photocell	NL2x2 7x2" ANSI wattage label	L10 3' of prewire leads
NL2x2 Night Air 2.2 antenna		L10 10' of prewire leads
PR3 3-pin NEMA twistlock receptacle, internally mounted		L20 20' of prewire leads
PR7 7-pin NEMA twistlock receptacle, internally mounted		L20 20' of prewire leads
PR7E 7-pin NEMA twistlock receptacle, replaceable final		L30 30' of prewire leads
PR7E 7-pin NEMA twistlock receptacle, replaceable final		
PH4 Long Life (LL) Twistlock Photocell for Solid State, 24V		
PCL Long Life (LL) Twistlock Photocell for Solid State, 480V		
S1 Shorting cap		
S2 DALI (DALI driver required)		

Accessories: Refer to separate specification sheets.

Please Note: Field Installed Options:
PH506 House side shield solid 90 degree
PH512D House side shield solid 120 degree
PH516D House side shield solid 160 degree
S1040-RL Replacement for 120-277V 347-480V 100W
S1040-RL Replacement for 347-480V 200V 100W

MARK APPROPRIATE BOX FOR FINAL OPTION

FINALS

No Final (NF) Ball (BL) Spike (SK)

Always consult a qualified electrician before installing any lighting product.

AcuityBrands | Holophane | 3825 Columbus Rd., Granville, OH 43023 | Phone: 866-HOLOPHANE | www.holophane.com
© 2022 Acuity Brands Lighting, Inc. All rights reserved. Rev. 05/25/22 Specifications subject to change without notice. Page 2 of 4

HOLOPHANE
LEADER IN LIGHTING SOLUTIONS

ARUE3
Utility Arlington Postop LED

Order Number: S1A: ARUE3-P80-30K-MVOLT-AL5-BK-BL
S1B: ARUE3-P40-30K-MVOLT-AL3-BK-BL W/ PHSS90
Notes: The S1A/S1B

GENERAL DESCRIPTION
The decorative postop lantern is ideal for lighting city streets, residential areas, campuses, parking lots, and walkways. The adjustable luminaire consists of a luminaire housing, a primary optic, and a decorative cover.

Optical Assembly
The optical assembly consists of a primary optic and acrylic reflector to precisely distribute light with excellent visual comfort and reduced glare. Comparable with CCT options of 2700K, 3000K, and 4000K. CB is 30 maximum. Available in optional DALI dimming. Driver is available in 120-277V, 347-480V, and 277V-480V options (S1040-RL). Driver life is rated to at least 100,000 hours. The 277V-480V (X000) option includes enhanced power quality protection for maximum robustness against line-to-line voltage transients, harmonic disturbances, and other real-world power quality disturbances.

Electrical Assembly
The cast aluminum electrical housing allows tool-less access with a spring loaded latch. The hidden hinge allows the door to swing open and remain open for easy access. A 10 gauge terminal block is provided to accept #14 through #2 size wires. The programmable LED driver includes 0-10V dimming with optional DALI dimming. Driver is available in 120-277V, 347-480V, and 277V-480V options (S1040-RL). Driver life is rated to at least 100,000 hours. The 277V-480V (X000) option includes enhanced power quality protection for maximum robustness against line-to-line voltage transients, harmonic disturbances, and other real-world power quality disturbances.

Finish
The luminaire housing and decorative cover are low copper die cast aluminum and finished with corrosion resistant super durable powder coat paint for maximum durability. Superior multi-stage pre-treating and painting process yields a finish that achieves a better coverage rating of 9 (per ASTM D1654) after over 5000 hours exposure to salt fog chamber (operated per ASTM D177).

Mounting
Luminaire includes an integral gasket that accepts a 3" tall by 82-118" x 3-1/8" O.D. stem. Secured to the stem by 6 set screws.

Control Options
Optional control include:
• Field adjustable output (AO) module for manual adjustment of lumen output of the luminaire
• Industry standard 0-10V dim and 7 pin NEMA photocell, optionally mounted inside the housing or externally in place of the lens
• "No light" AIR enabled for connection to night AIR wireless control networks via internally mounted antenna (N1AIR) or via motion-sensing photocell (S0500).
• DALI compatible drivers. Contact factory for details.
• Customization of lumen packages is possible. Contact factory for details.

Listing
The luminaire is CSA certified to US and Canadian standards, 200V/100A extreme surge protection per ANSI/IEEE C136.2, suitable for operation in ambient temperatures from -40°C to 60°C. Optical chamber is rated to IP66.
DesignLight Consortium (DLC) qualified product. Not all versions of this product may be DLC qualified. Please check the DLC Qualified Products List at www.dlcqualify.com/DLC.

Buy American
This product is assembled in the USA and meets the Buy American government procurement requirements under FAR, DFARS and DOT. Please refer to www.buyamericans.com/resources/buy-american for additional information.

Warranty
5-year limited warranty. This is the only warranty provided and no other statements in this specification sheet create any warranty of any kind. All other express and implied warranties are disclaimed. Complete warranty terms located at: www.holophane.com/support/warranty/terms-and-conditions

Note: Actual performance may differ as a result of end-user environment and application. All values are design or typical values, measured under laboratory conditions at 25 °C. Specifications subject to change without notice.

ORDERING INFORMATION
Example: ARUE3 P30 MVOLT GL3 BK SK PR7

Housing Style	LED Performance Package	Color Temperature	Voltage	Optics	Color	Final
ARUE3 Utility Arlington LED Post Top	P10 30W nominal	27K 2700K CCT	MVOLT 120-277V	Acrylic Reflector BK	Black	BL Ball
	P20 40W nominal	30K 3000K CCT	MVOLT 347-480V	AL3 Acrylic reflector 109°5	Bronze	SK Spike
	P30 50W nominal	40K 4000K CCT	100V 277-480V with enhanced power quality protection	CNC 109°5	Custom-matched color	None
	P40 60W nominal			GL Acrylic reflector 109°5	Green	
	P50 70W nominal			GLS Glass Reflector	Grey	
	P60 80W nominal			GL3 Glass reflector 109°5	White	
	P70 90W nominal			GLS Glass reflector 109°5	White	
	P80 100W nominal			W11	White	

Options:

Control Options:	NEMA Label Options:	Fixture Lead Options:
AO Field adjustable output	NL1x1 7x1" ANSI wattage label	L18 1.5' of prewire leads
N1AIR Night Air motion sensing photocell	NL2x2 7x2" ANSI wattage label	L10 3' of prewire leads
NL2x2 Night Air 2.2 antenna		L10 10' of prewire leads
PR3 3-pin NEMA twistlock receptacle, internally mounted		L20 20' of prewire leads
PR7 7-pin NEMA twistlock receptacle, internally mounted		L20 20' of prewire leads
PR7E 7-pin NEMA twistlock receptacle, replaceable final		L30 30' of prewire leads
PR7E 7-pin NEMA twistlock receptacle, replaceable final		
PH4 Long Life (LL) Twistlock Photocell for Solid State, 24V		
PCL Long Life (LL) Twistlock Photocell for Solid State, 480V		
S1 Shorting cap		
S2 DALI (DALI driver required)		

Accessories: Refer to separate specification sheets.

Please Note: Field Installed Options:
PH506 House side shield solid 90 degree
PH512D House side shield solid 120 degree
PH516D House side shield solid 160 degree
S1040-RL Replacement for 120-277V 347-480V 100W
S1040-RL Replacement for 347-480V 200V 100W

MARK APPROPRIATE BOX FOR FINAL OPTION

FINALS

No Final (NF) Ball (BL) Spike (SK)

Always consult a qualified electrician before installing any lighting product.

AcuityBrands | Holophane | 3825 Columbus Rd., Granville, OH 43023 | Phone: 866-HOLOPHANE | www.holophane.com
© 2022 Acuity Brands Lighting, Inc. All rights reserved. Rev. 05/25/22 Specifications subject to change without notice. Page 2 of 4

HOLOPHANE
LEADER IN LIGHTING SOLUTIONS

ARUE3
Utility Arlington Postop LED

Order Number: S1A: ARUE3-P80-30K-MVOLT-AL5-BK-BL
S1B: ARUE3-P40-30K-MVOLT-AL3-BK-BL W/ PHSS90
Notes: The S1A/S1B

GENERAL DESCRIPTION
The decorative postop lantern is ideal for lighting city streets, residential areas, campuses, parking lots, and walkways. The adjustable luminaire consists of a luminaire housing, a primary optic, and a decorative cover.

Optical Assembly
The optical assembly consists of a primary optic and acrylic reflector to precisely distribute light with excellent visual comfort and reduced glare. Comparable with CCT options of 2700K, 3000K, and 4000K. CB is 30 maximum. Available in optional DALI dimming. Driver is available in 120-277V, 347-480V, and 277V-480V options (S1040-RL). Driver life is rated to at least 100,000 hours. The 277V-480V (X000) option includes enhanced power quality protection for maximum robustness against line-to-line voltage transients, harmonic disturbances, and other real-world power quality disturbances.

Electrical Assembly
The cast aluminum electrical housing allows tool-less access with a spring loaded latch. The hidden hinge allows the door to swing open and remain open for easy access. A 10 gauge terminal block is provided to accept #14 through #2 size wires. The programmable LED driver includes 0-10V dimming with optional DALI dimming. Driver is available in 120-277V, 347-480V, and 277V-480V options (S1040-RL). Driver life is rated to at least 100,000 hours. The 277V-480V (X000) option includes enhanced power quality protection for maximum robustness against line-to-line voltage transients, harmonic disturbances, and other real-world power quality disturbances.

Finish
The luminaire housing and decorative cover are low copper die cast aluminum and finished with corrosion resistant super durable powder coat paint for maximum durability. Superior multi-stage pre-treating and painting process yields a finish that achieves a better coverage rating of 9 (per ASTM D1654) after over 5000 hours exposure to salt fog chamber (operated per ASTM D177).

Mounting
Luminaire includes an integral gasket that accepts a 3" tall by 82-118" x 3-1/8" O.D. stem. Secured to the stem by 6 set screws.

Control Options
Optional control include:
• Field adjustable output (AO) module for manual adjustment of lumen output of the luminaire
• Industry standard 0-10V dim and 7 pin NEMA photocell, optionally mounted inside the housing or externally in place of the lens
• "No light" AIR enabled for connection to night AIR wireless control networks via internally mounted antenna (N1AIR) or via motion-sensing photocell (S0500).
• DALI compatible drivers. Contact factory for details.
• Customization of lumen packages is possible. Contact factory for details.

Listing
The luminaire is CSA certified to US and Canadian standards, 200V/100A extreme surge protection per ANSI/IEEE C136.2, suitable for operation in ambient temperatures from -40°C to 60°C. Optical chamber is rated to IP66.
DesignLight Consortium (DLC) qualified product. Not all versions of this product may be DLC qualified. Please check the DLC Qualified Products List at www.dlcqualify.com/DLC.

Buy American
This product is assembled in the USA and meets the Buy American government procurement requirements under FAR, DFARS and DOT. Please refer to www.buyamericans.com/resources/buy-american for additional information.

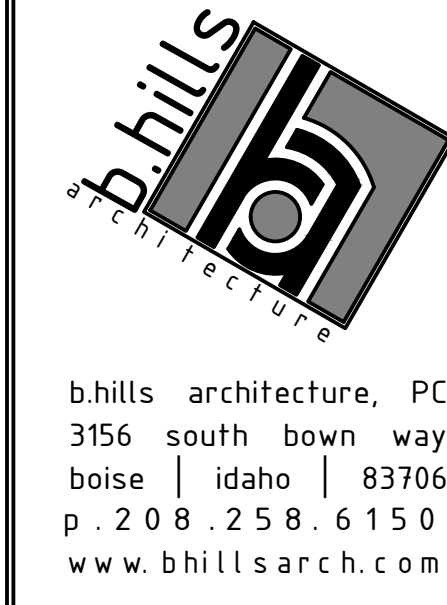
Warranty
5-year limited warranty. This is the only warranty provided and no other statements in this specification sheet create any warranty of any kind. All other express and implied warranties are disclaimed. Complete warranty terms located at: www.holophane.com/support/warranty/terms-and-conditions

Note: Actual performance may differ as a result of end-user environment and application. All values are design or typical values, measured under laboratory conditions at 25 °C. Specifications subject to change without notice.

ORDERING INFORMATION
Example: ARUE3 P30 MVOLT GL3 BK SK PR7

Performance Package	System Watt	Optical Distribution	27K (2700K, 70 CRI)	30K (3000K, 70 CRI)	40K (4000K, 70 CRI)	
			Lumens	LPW	Lumens	LPW
P10	31	GL3	3,522	98	3,334	107
		GLS	3,522	97	3,291	106
		AL3	3,224	104	3,322	113
P20	40	GL3	3,888	99	3,373	108
		GLS	4,075	99	4,386	108
		GL3	3,943	98	4,329	107
P30	51	GL3	4,874	96	5,124	105
		AL3	4,241	105	4,633	114
		GLS	4,962	98	4,437	110
P40	59	GL3	4,938	98	5,394	107
		GL3	5,276	103	5,607	113
		AL3	4,996	99	5,457	109
P50	70	GL3	5,952	90	6,501	110
		GLS	5,874	99	6,416	108
		AL3	6,286	106	6,867	118
P60	80	GL3	6,821	102	6,977	111
		GL3	6,944	98	7,476	107
		GLS	6,755	97	7,218	106
P70	90	GL3	7,229	104	7,896	113
		GLS	6,924	99	7,563	108
		GL3	7,621	96	8,215	105
P80	100	GL3	7,522	95	8,216	103
		GL3	8,020	101	8,793	110
		GLS	7,771	97	8,412	108
P90	100	GL3	8,417	93	9,193	102
		GLS	8,307	92	9,074	101
		AL3	8,690	99	9,211	108
P100	100	GL3	8,575	95	9,301	103
		GL3	9,078	91	9,915	99
		GLS	8,939	89	9,796	98
P100	100	AL3	9,388	96	10,473	105
		AL3	9,384	92	10,031	100

AcuityBrands | Holophane | 3825 Columbus Rd., Granville, OH 43023 | Phone: 866-HOLOPHANE | www.holophane.com
© 2022 Acuity Brands Lighting, Inc. All rights reserved. Rev. 05/25/22 Specifications subject to change without notice. Page 2 of 4

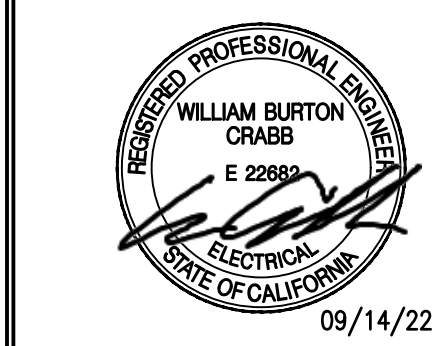


b.hills architecture, PC
3156 south bowen way
boise | idaho | 83706
p . 2 0 8 . 2 5 8 6 1 5 0
www.bhillsarch.com

PARK IV GROUP LLC

THE IVY AT BLUE OAKS

275 ROSEVILLE PARKWAY
ROSEVILLE, CA 95747



REVISIONS:

1 Entitlement 07/18/2022
planning comments

2 Planning Comments 08/14/2022

THESE DESIGN AND DRAWINGS ARE THE EXCLUSIVE PROPERTY OF b.hills architecture, PC AND ARE NOT TO BE REPRODUCED OR COPIED IN ANY MANNER WITHOUT THE WRITTEN PERMISSION OF b.hills architecture, PC. ALL RIGHTS RESERVED.

CITY OF ROSEVILLE APPROVAL



PROJECT NO: 22107
DRAWN BY: VM
CHECKED BY: GS
SUBMITTAL DATE: 6/10/2022
DTB DATE:

S2: 67M28

Basset Textured Black 8-Piece LED Path and Spot Light Set \$399.99 ADD TO CART

Landscaping Lighting / Complete Kits / Dusk to Dawn / Contemporary / Style # 67M28

Basset Textured Black 8-Piece LED Path and Spot Light Set
\$399.99
 or 4 interest-free payments of \$100.00 with sezzle

FREE SHIPPING! | **Low Price Guarantee**
SHIPS TODAY! (orders by 3 PM Mountain)

1 ADD TO CART SAVE

DESIGN CHAT

Product Details

Brighten up your night in the front yard or back with this eight-piece energy-efficient LED path and spot light set with included photocell transformer and cable.

Additional Info:

- Complete low voltage LED landscape light set. By John Timberland. 4 path lights, 2 spot lights, one 12V 4.5 watt plug-in transformer, 50-feet of cable.
- Path lights are 23" high x 6 1/4" wide. Spots are 7 1/2" high x 3" wide. 8" ground stakes.
- Transformer is 6 1/2" wide x 2 3/4" high x 3 1/2" deep. Cord is 69 1/2" long.
- Path lights with 4 watt built-in LED, comparable to a 35 watt incandescent. 350 lumens. Spot lights rated at 340 lumens. Both at 3000K.
- 148-degree beam spread for path light. 52-degree beam spread for spot light.
- Textured black finish steel path lights. Black finish cast aluminum spot lights.

JOHN TIMBERLAND LED

Shop all John Timberland

Luminaire Type: E4/E5
 Catalog Number: E4: EV06-3010-AR-MID-LS-AVOLT-EX10
 E5: EV06-3008-AR-MID-LS-AVOLT-EX10

Multiple Layers of Light

General Illumination Round Downlight 6"

250 - 8,000 lumens

30,000 - 17,500 lumens

Feature Set

- Bounding Ray™ optical design
- Unlimited optics mechanically attach the light engine to the lower reflector for complete optical alignment.
- 45° cutoff to source and source image
- Fully serviceable and upgradeable lensed LED light engine
- 70% lumen maintenance at 60,000 hours
- 2.5 SDCM, 85 CRI typical, 90+ CRI optional
- Fixtures are wet location, covered ceiling
- Available with 10% dimming, 1% dimming, or dim to dark
- Balancing distribution with feathered edges provides even illumination on horizontal and vertical surfaces
- ENERGY STAR® certified product

Distribution

very narrow 0.5 SAH narrow 0.7 SAH medium 0.8 SAH medium wide 1.6 SAH wide 1.2 SAH

Superior Performance

Nominal Lumens	250	500	750	1000	1500	2000	2500	3000	3500	4000	4500	5000	6000	8000	10,000	12,000	15,000	17,500
Defined Lumens	297	519	776	994	1471	2006	2537	3077	3542	4027	4533	5056	6371	8247	10637	13332	15776	17981
Voltage	3.4	6.2	6.2	9.6	14.7	19.7	24.7	29.5	33.8	39.0	47.3	48.7	57.6	74.9	97.1	115.0	150.9	175.3
Lumens per Watt	87.4	83.7	94.6	103.5	100.1	101.8	102.7	104.3	104.8	103.3	95.8	107.9	108.6	108.1	109.5	107.2	104.5	101.5

Coordinated Apertures | Multiple Layers of Light

General Illumination Layer | EVO High Center Beam Layer | Incito EVO + Incito — Multiple Layers of Light

Core Downlight Adjustable Dome Wallwash Lensed Wallwash Cylinder Pinacle Bead Reprolic

Healthcare MRI Surgical Suite Patient Room

Special Applications Dynamic Foot Service Vents/Temp Clean Room Shower Clean Room

EV06-OPEN page 2 of 9 | GOTHAM ARCHITECTURAL DOWNLIGHTING | 1480 Laker Road, Covington, LA 70012 | P 800-765-SERV (7378) | gathamlighting.com © 2014-2022 Acuity Brands Lighting Inc. All Rights Reserved. Rev. 05/13/22 Specifications subject to change without notice.

Luminaire Type: **6"** General Illumination Round Downlight
 Catalog Number:

EXAMPLE: EV06-3010-AR-MID-LS-AVOLT-EX10

Series	Color Temperature	Nominal Lumens Values	Reflector & Flange Color	Trim Style	Distribution
EV06	27K 2700 K	82 250 lumens	AR Clear	(blank) Self-flanged	WVD Very Narrow (0.5 SAH)
	30K 3000 K	89 300 lumens	PR Pewter	FL Flangeless	ND Narrow (1.2 SAH)
	35K 3500 K	87 250 lumens	WTR White		MD Medium (1.0 SAH)
	40K 4000 K	10 1000 lumens	GR Gold		MWD Medium Wide (1.0 SAH)
	50K 5000 K	15 1500 lumens	WB White		WD Wide (1.2 SAH)
		20 2000 lumens	BR Black		
		25 2500 lumens	WR White		
		30 3000 lumens	WRMB White Anti-microbial		
		35 3500 lumens			
		120 12000 lumens			
		150 15000 lumens			
		175 17500 lumens			

Finish

Finish	Voltage	Driver*	Options
LS Semi-specular	INVL1	E210	ECCS2*
LD Matte-diffuse	120	E21	ECOP*
LS Specular	277	E210	
	347**	E210	
		E21	
		E20	
		EDAP*	
		EDAP*	

Control Interface

Control Interface	Options
NLT†	SE Single fase, Specify 120V or 277V.
NLTAR†	TWP White painted flange
NLTARE†	TBL† Black painted flange
NLTARE†	EL Emergency battery pack, 10W with integral test switch
NLTARE†	ELR Emergency battery pack, 10W, with self-diagnostics, with remote test switch
NLTARE†	ELSD Emergency battery pack, 10W, with self-diagnostics, remote test switch
NLTARE†	ELWCP Emergency battery pack, 10W Constant Power, CA Title 20 compliant with integral test switch
NLTARE†	ELWCPR Emergency battery pack, 10W Constant Power, CA Title 20 compliant with remote test switch
NBT†	NHT†
BST†	BDT†
SOCI†	CP†
HAP†	RH†

ACCESSORIES — order as separate catalog numbers (shipped separately)

Accessories	Description
SCAB	Sloped ceiling adapter. Degree of slope must be specified (50, 100, 150, 200, 250, 300). Ex. SCAB 100. Refer to TECH-150.
CIA EV06	6" Aperture ceiling thickness adapter, for up to 8.000M (extends mounting frame to accommodate ceiling thickness up to 5").
CIA-8 YNL	6" Aperture ceiling thickness adapter, for use with E20B or CP up to 8.000M, or 8.000M (extends mounting frame to accommodate ceiling thickness up to 5").
CIA-8 YNL	6" Aperture ceiling thickness adapter, for 10.000M and up (extends mounting frame to accommodate ceiling thickness up to 5"). For use with CW/DOWN trims, E20B, CP or flame options.
ISO BC	0-10V wallbox dimmer. Refer to ISO-BC.

ORDERING NOTES

- Not available with finishes.
- Not available with emergency battery pack options.
- Supplied with factory installed step-down transformer.
- Refer to TECH-240 for compatible dimmers.
- Not available with rLight® and XPoint options.
- Specify voltage.
- For use with different reflector finish only (i.e. AR, PR, WTR, GR options). Not applicable with WB (black reflector) or FL (flangeless) option.
- ER for use with generator supply power. Will require an emergency hot feed and normal hot feed. Fixture begins at 80% light level. Must be specified with NLT or NLTAR. Only available with E21 and E20 drivers.
- 12,000M max with EL or rLight® options. 5,000M max with Luton drivers combined with E21 and E20 drivers.
- Not available with ELR, HAD, DALI, or EDAP options.
- Only available 800M - 15,000M with E20 LED drivers.
- Not available DALI or DMX drivers. Not available with CP or NBD options. Not recommended for metal ceiling installations.
- When combined with the E21, E21.0, or E20 option, normal luminaires (non-emergency) can be used as a normal power sensing device for nearby rLight AIR devices and luminaires with EM emergency options.

EV06-OPEN page 2 of 9 | GOTHAM ARCHITECTURAL DOWNLIGHTING | 1480 Laker Road, Covington, LA 70012 | P 800-765-SERV (7378) | gathamlighting.com © 2014-2022 Acuity Brands Lighting Inc. All Rights Reserved. Rev. 05/13/22 Specifications subject to change without notice.